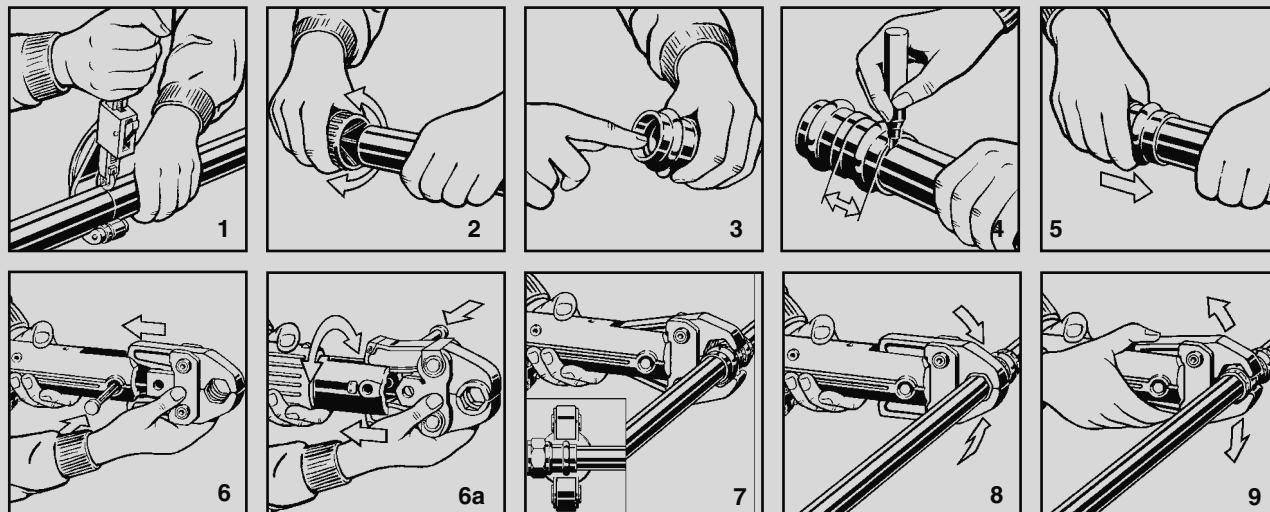


Product Instructions

For Types K, L and M Hard Copper Tubing in 1/2" to 2" and Soft Copper Tubing in 1/2" to 1-1/4"

⚠ WARNING

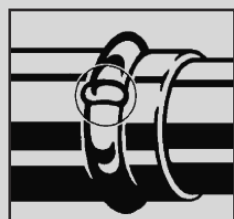
Read and understand all instructions for installing ProPress fittings. Failure to follow all instructions may result in extensive property damage, serious injury or death.



ProPress Insertion Depth Chart

Tube Size	1/2"	3/4"	1"	1-1/4"	1-1/2"	2"
Insertion Depth	3/4"	7/8"	7/8"	1"	1-7/16"	1-9/16"

1. Cut copper tubing at right angles using displacement type cutter or fine-toothed steel saw.
2. Remove burr from inside and outside of tubing to prevent cutting sealing element.
3. Check seal for correct fit. Do not use oils or lubricants. Use only ProPress Shiny Black EPDM or Dull Black FKM Sealing Elements.
4. Mark proper insertion depth as indicated by the ProPress Insertion Depth Chart. Improper insertion depth may result in improper seal.
5. While turning slightly, slide press fitting onto tubing to the marked depth. **Note: End of tubing must contact stop.**
6. Insert appropriate Viega jaw into the pressing tool and push in holding pin until it locks in place.
7. Open the jaw and place at right angles on the fitting. Visually check insertion depth using mark on tubing.
8. Start pressing process and hold the trigger until the jaw has engaged the fitting.
9. After pressing, the jaw can be opened again.
10. For applications requiring ProPress with FKM sealing elements, remove the factory installed EPDM sealing element and replace with FKM sealing element.



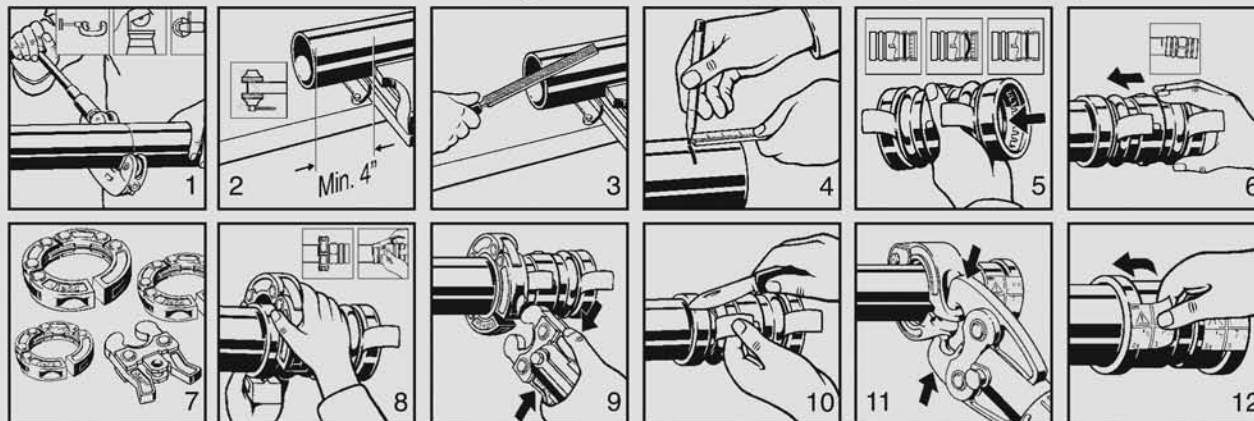
Pressure Testing: Pressure testing is to be carried out in accordance with local codes. ProPress includes the Smart Connect (SC) Feature providing quick and easy identification of **unpressed** connections during the pressure testing process. **Unpressed connections are located by pressurizing the system with air or water. When testing with air the pressure range is 1/2 PSI to 85 PSI maximum. When testing with water the pressure range is 15 PSI to 85 PSI maximum.** The SC Feature is an integral part of the design of the fitting assuring leakage of liquids and/or gases from inside the system past the sealing element of an unpressed connection. The SC Feature is removed during the pressing process creating a leak-proof, permanent connection.

Product Instructions

Copper Fittings for Types K, L and M Hard Copper Tubing in 2-1/2" to 4"

⚠ WARNING

Read, understand and follow all instructions for installing ProPress XL fittings. Failure to follow all instructions may result in extensive property damage, serious injury or death.



ProPress XL Insertion Depth Chart

Tube Size	2-1/2"	3"	4"
Insertion Depth	2-1/8"	2-1/8"	2-1/2"

1. Cut copper tubing at right angles using displacement type cutter or fine-toothed steel saw.
2. Keep end of tubing a minimum of 4" away from the contact area of the vise to prevent possible damage to the tubing in the press area.
3. Remove burr from inside and outside of tubing to prevent cutting sealing element.
4. Mark proper insertion depth as indicated by the ProPress XL insertion depth chart. Improper insertion depth may result in an improper seal.
5. Check seal and grip ring for correct fit.
6. While turning slightly, slide press fitting onto tubing to the marked depth. Do not use oils or lubricants.
7. ProPress XL fitting connections must be performed with ProPress XL Rings and Actuator. Use of other ring set or actuator will result in an improper connection. See Ridgid Operator's Manual for proper tool instructions.
8. Open XL Ring and place at right angle on the fitting. XL Ring must be engaged on the fitting bead. Check insertion depth.
9. With Actuator inserted into the tool, open the Actuator as shown.
10. Place Actuator onto XL Ring and start pressing process. Hold the trigger until the Actuator has engaged the XL Ring. Keep extremities and foreign objects away from XL Ring and Actuator during pressing operation to prevent injury or incomplete press.
11. Release Actuator from XL Ring and then remove the XL Ring from the fitting on completion of press. Remove elastic control ring from fitting indicating press has been performed.
12. For applications requiring ProPress XL with FKM sealing elements, remove the factory installed EPDM sealing element and replace with FKM sealing element.



Pressure Testing: Pressure testing is to be carried out in accordance with local codes. ProPress XL also includes the Smart Connect Feature providing quick and easy identification of unpressed connections during the pressure testing process. Unpressed connections are located by pressurizing the system with air or water. When testing with air the pressure range is 1/2 PSI to 85 PSI Maximum. When testing with water the pressure range is 15 PSI to 85 PSI Maximum. The SC Feature is an integral part of the design of the fitting assuring leakage of liquids and/or gases from inside the system past the sealing element of an unpressed connection. The SC Feature is removed during the pressing process creating a leak-proof, permanent connection.

Product Instructions

Copper Fittings for Types K, L and M Hard Copper Tubing in 2-1/2" to 4"

⚠ WARNING

Read, understand and follow all instructions for installing ProPress XL-C fittings. Failure to follow all instructions may result in extensive property damage, serious injury or death.



ProPress XL-C Insertion Depth Chart

Tube Size	2-1/2"	3"	4"
Insertion Depth	1-5/8"	1-7/8"	2-3/8"

1. Cut copper tubing at right angles using displacement type cutter or fine-toothed steel saw.
2. Keep end of tubing a minimum of 4" away from the contact area of the vise to prevent possible damage to the tubing in the press area.
3. Remove burr from inside and outside of tubing to prevent cutting sealing element.
4. Mark proper insertion depth as indicated by the ProPress XL-C insertion depth chart. Improper insertion depth may result in an improper seal.
5. Check seal and grip ring for correct fit.
6. Illustration demonstrates proper fit of grip ring, separation ring and sealing element. Use only ProPress Shiny Black EPDM sealing elements.
7. While turning slightly, slide press fitting onto tubing to the marked depth. Do not use oils or lubricants.
8. ProPress XL-C fitting connections must be performed with ProPress XL-C Rings and V2 ACTUATOR. Use of ProPress XL Rings and/or Actuator (for Bronze fittings) will result in an improper connection. See Ridgid Operator's Manual for proper tool instructions.
9. Open XL-C Ring and place at right angles on the fitting. XL-C Ring must be engaged on the fitting bead. Check insertion depth.
10. With V2 ACTUATOR inserted into the tool, open the V2 ACTUATOR as shown and connect V2 ACTUATOR to the XL-C Ring.
11. Place V2 ACTUATOR onto XL-C Ring and start pressing process. Hold the trigger until the Actuator has engaged the XL-C Ring. Keep extremities and foreign objects away from XL-C Ring and V2 ACTUATOR during pressing operation to prevent injury or incomplete press.
12. Release V2 ACTUATOR from XL-C Ring and then remove the XL-C Ring from the fitting on completion of press. Remove elastic control ring from fitting indicating press has been performed.



Pressure Testing: Pressure testing is to be carried out in accordance with local codes. ProPress XL-C also includes the Smart Connect Feature providing quick and easy identification of unpressed connections during the pressure testing process. Unpressed connections are located by pressurizing the system with air or water. When testing with air the pressure range is 1/2 PSI to 85 PSI Maximum. When testing with water the pressure range is 15 PSI to 85 PSI Maximum. The SC Feature is an integral part of the design of the fitting assuring leakage of liquids and/or gases from inside the system past the sealing element of an unpressed connection. The SC Feature is removed during the pressing process creating a leak-proof, permanent connection.

VEIGA • One Company... One Partner... Delivering System Solutions.

301 N. Main, Floor 9 • Wichita, KS 67202 • Ph: 877-Viega-NA • Fax: 316-425-7618 • E-Mail: service@viega.com • www.viega-na.com